



FRÍANT

Materials and Finishes Catalog







FRÍANT

A Great Project Starts with Quality Materials

At Fríant, we believe in furniture that's designed to perform and solutions that provide our end-users the elements needed to create an efficient and modern workspace.

We offer an extensive range of quality fabrics and materials, which we have sourced to meet both the environmental and valued standards Fríant is known for.

Want to customize your workspace? Work with customer service for a more personal look by customizing your system with COM fabrics (Customers Own Materials).

To explore more, visit friant.com.

Fríant, **All Workstyles Welcome.**

FABRICS

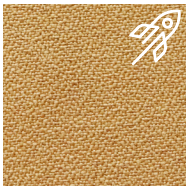
 Available on 10-Day Quickship



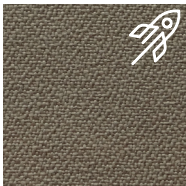
Fabric is scheduled for discontinuation when inventory is exhausted. Contact Customer Service for current stock levels. After discontinuation fabric will be available with extended lead time.

For further information, view the Materials Reference Guide on the DRC

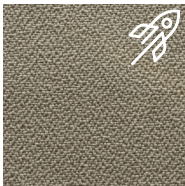
SLIDE FABRIC LINE



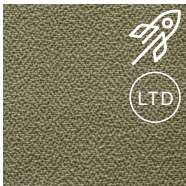
PF101-1
CARAMEL



PF101-2
SLATE



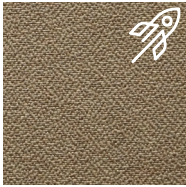
PF101-3
PEWTER



PF101-4
VERDE



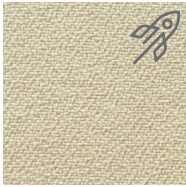
PF101-6
VINTAGE



PF101-7
JAVA



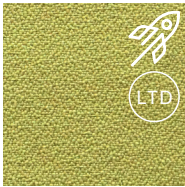
PF101-8
LATTE



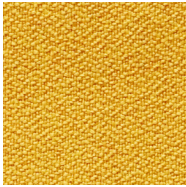
PF101-9
STERLING



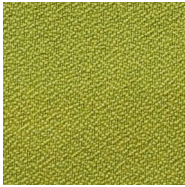
PF101-10
CREMA



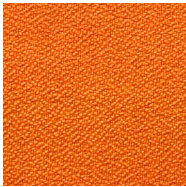
PF101-12
STEM



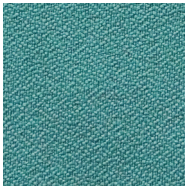
PF101-13
MUSTARD



PF101-14
AVOCADO



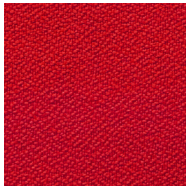
PF101-15
PUMPKIN



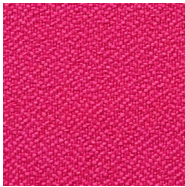
PF101-16
OCEAN



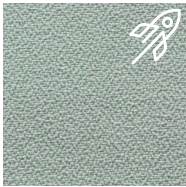
PF101-17
BLUEBERRY



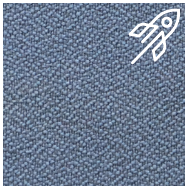
PF101-18
CARDINAL



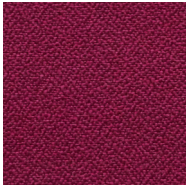
PF101-19
FLAMINGO



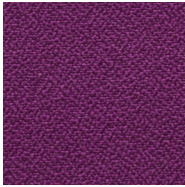
PF101-20
SERENITY



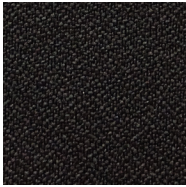
PF101-21
AZURE



PF101-22
ORCHID



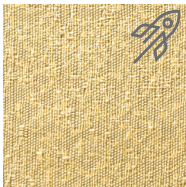
PF101-23
PLUM



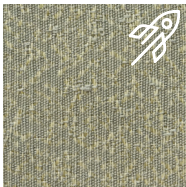
PF101-24
RAVEN

SILKY FABRIC LINE

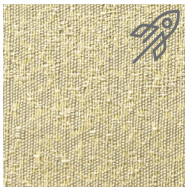
* For Silky application details, see fabric application guide on page 10.



PF401-1
NATURAL



PF401-2
PARIDS



PF401-3
OVERCAST



PF401-4
FIELD



PF401-5
GRAPHITE

SKY FABRIC LINE

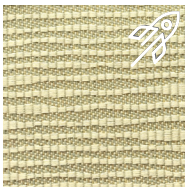
* For Sky application details, see fabric application guide on page 10.



PF301-1
TERRA



PF301-2
BIRCH

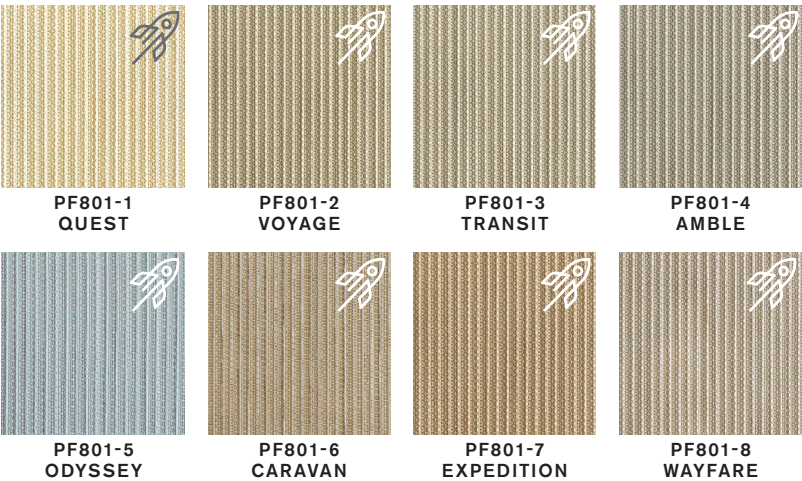


PF301-3
MOSS

FABRICS

JOURNEY FABRIC LINE

* For Journey application details, see
fabric application guide on page 10.



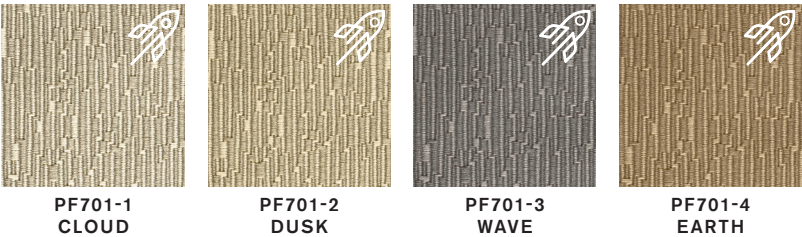
PASSAGE FABRIC LINE

* For Passage application details, see
fabric application guide on page 10.

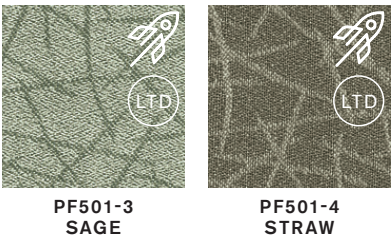


TERRAIN FABRIC LINE

* For Terrain application details, see
fabric application guide on page 10.

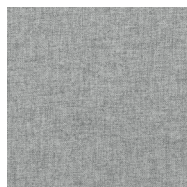


STICKS FABRIC LINE



FAWN

FABRIC LINE



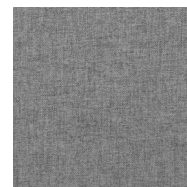
PF901-1
HEATHER



PF901-2
NAVY



PF901-3
SAFFRON



PF901-4
FROST

FELT

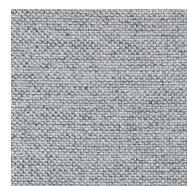
FABRIC LINE



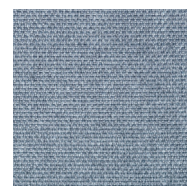
PF1001-1
CANARY



PF1001-2
DUSK



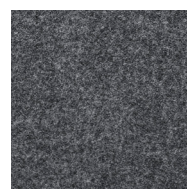
PF1001-3
STONE



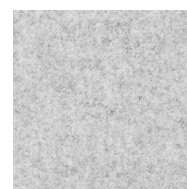
PF1001-4
STEEL

HARRISON

FABRIC LINE



PF1101-1
CHARCOAL



PF1101-4
SMOKE

FINISHES

WOOD VENEERS


Note: Veneer finishes are available on our Casegoods, Willow and Mesa lines standard



GITANA



WORKSURFACES
LAMINATE



Available on 10-Day Quickship

| | | | | |
|---|---|--|---|---|
|  |  |  |  |  |
| M1 LIGHT MAPLE | M2 LIGHT CHERRY | M3 MEDIUM CHERRY | M4 DARK MAHOGANY | M5 LIGHT MAHOGANY |
|  |  |  |  |  |
| M6 LIGHT GRAY | M7 OFF WHITE | M8 GREY SPECKS | M9 CLOUD WHITE | M10 ESPRESSO |
|  |  |  |  |  |
| M11 LIGHT WALNUT | M12 MEDIUM WALNUT | M13 LICORICE | M14 CAROB | M15 MOUSSE |
|  |  |  |  |  |
| M16 TUNDRA | M17 COCOA | M18 CAPITAN | M19 FOG | M20 SANDSTONE |
|  |  |  |  |  |
| M21 MEDIUM OAK | M22 HARBOR | M23 BARK | M24 TARMAC | M25 WINTER |
|  |  |  |  | |
| M26 STORM | M27 MEDIUM ASH | M28 ARCTIC | M29 RAVEN | |

DASH
INTERRA
VERITY



MY-HITE
& BEAM



SYSTEM 2
BASE (PLASTIC)



SYSTEM 2
PAINT



NOVO



FINISH & EDGE MATRIX

MC102019

Below you'll find our finishes and paints available for our full line of products.

INTERRA | DASH | NOVO | VERITY | MY-HITE | WILLOW* | SYSTEM2 | MESA*

RED - 10 DAY QUICKSHIP

WORKSURFACE FINISHES

| | | | | | | | |
|----|----------------|-----|---------------|-----|------------|-----|------------|
| M1 | Light Maple | M9 | Cloud White | M16 | Tundra | M23 | Bark |
| M2 | Light Cherry | M10 | Espresso | M17 | Cocoa | M24 | Tarmac |
| M3 | Medium Cherry | M11 | Light Walnut | M18 | Capitan | M25 | Winter |
| M4 | Dark Mahogany | M12 | Medium Walnut | M19 | Fog | M26 | Storm |
| M5 | Light Mahogany | M13 | Licorice | M20 | Sandstone | M27 | Medium Ash |
| M6 | Light Gray | M14 | Carob | M21 | Medium Oak | M28 | Arctic |
| M7 | Off White | M15 | Mousse | M22 | Harbor | M29 | Raven |
| M8 | Gray Specks | | | | | | |

EDGE FINISHES

| | | | | | | | |
|----|----------------|-----|---------------|-----|------------|-----|------------|
| E1 | Light Maple | E9 | Cloud White | E18 | Mousse | E26 | Bark |
| E2 | Light Cherry | E10 | Espresso | E19 | Tundra | E27 | Tarmac |
| E3 | Medium Cherry | E11 | Medium Tone | E20 | Cocoa | E28 | Winter |
| E4 | Dark Mahogany | E12 | Dark Tone | E21 | Capitan | E29 | Storm |
| E5 | Light Mahogany | E13 | Licorice | E22 | Fog | E30 | Medium Ash |
| E6 | Light Gray | E14 | Light Walnut | E23 | Sandstone | E31 | Arctic |
| E7 | Off White | E15 | Medium Walnut | E24 | Medium Oak | E32 | Raven |
| E8 | Black Umber | E17 | Carob | E25 | Harbor | | |

GITANA FINISHES

| | | | |
|---------------|--------------------|---------------|-------------|
| MAHO Mahogany | LTWNT Light Walnut | ESPR Espresso | CHER Cherry |
|---------------|--------------------|---------------|-------------|

COLLECTION PAINTS

CW Cloud White DT Dark Tone LG Light Gray MT Medium Tone SV Silver

DASH | INTERRA | VERITY

CW, SV, BU

NOVO

DT, MT, CW, SV

SYSTEM2

Trim DT, MT, LG Base DT, MT, LG

MY-HITE | BEAM

CW, SV, BU

ORDERING PHYSICAL SAMPLES

Please consult your sales rep or visit our dealer resource center

<http://dealers.friant.com/dealers/samples/>

**Wood Veneer Options Available for Willow and Mesa*

Note: Images shown simulate our materials but are not exact matches of the finished product. Samples may vary slightly.

FABRIC APPLICATION GUIDE

We install our line of fabrics non-directionally by default on all our products with a few exceptions which we have highlighted below. For full fabric application details see Materials Reference Guide on the DRC.

SYSTEM2

85H Panels: Directional

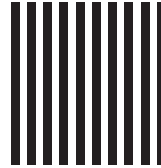
NOVO

85H Panels: Directional

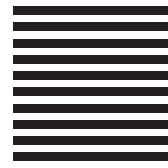
INTERRA

Fabric Tiles: Directional

Exception: *Sky Collection*



non-directional
(vertical)



directional
(horizontal)

Customer Service

We stand by our product with an industry-leading customer service team always there to assist with design, development, and delivery. Rest assured, we have you covered.

Quickship

Get your office systems in place fast with our exclusive 10-day Quickship program. It's available for most standard Friant lines, work surfaces and panel fabrics. We keep our distribution centers stocked with the most popular systems and options, so you don't have to wait.

GSA

We are proud to be a supplier and strategic partner with many federal, state and local governments. We understand state and local government regulations and are committed to providing you with dedicated resources, unique solutions and our three decades of experience to help you work smarter.

Elite Dealer Network

Friant products are supplied by a nationwide network of leading workspace furniture dealers, installers and maintenance teams. Your project is protected with trained specialists for a lifetime of use.

Design Services

Our in-house product experts are available to assist with providing typicals based on your specifications, work with you to make changes to existing concepts, and can provide you with 3D renderings. If you have your own design team, we offer dealer specification checks and training.

Manufacturing & Distribution

San Leandro, CA | Suffolk, VA

We own and operate manufacturing facilities to provide cost savings and quality for all of our products.

Showrooms

San Leandro, CA | Suffolk, VA | Dallas, TX
Costa Mesa, CA | Atlanta, GA | Shanghai





friant.com